

WT-WS1 V1.00 Outdoor Voice Prompter (Human Body Induction)

User Manual



1.Features

- When people get into the work area of PIR motion sensor, it will trigger to play sound file.
- DIY to make advertise promotion
- Two way to change sound file :use a software in Wechat and USB disk
- Support to use Wechat Mini Program to control volume
- Support Single loop play and All sound loop play function .
- Support 20 groups timing play and 1 group interval play
- The name and password of blue tooth is changeable
- Support to play MP3 format sound file
- Max to record 4 minute sound file by phone
- Built in power amplifier and 2W/8Ω loud speaker
- Multiple function of on/off button
- Easy installation: Stick directly or hang up
- Solar power assist to charge
- Optional charge ways :6V6W solar power board or adaptor (5V1A)

2.Parameter

Power supply	Micro USB 5V/1A adaptor or 6V6W solar power board	
	Build with 2000MAH Lithium battery	
Charging Current	860mA	
Working Current	Dormant mode	≤86uA
	Playing mode	≤362mA
	Standby mode	≤29.5mA
Sound file format	MP3	
Speaker	8Ω/2W	
Working distance of motion sensor	≤4 Meters	
Voice level	≤85dB(less than 1 meter)	
Working distance of bluetooth	≤10 meters	
Code rate of sound file	8~320Kbps	

3. Product display



Button name	Operation	Function	LED Pane Mode
On/off button	Hold for 3 seconds	Turn on	Light for 3 seconds
	Hold for 4 seconds	Turn off	Twinkle 3 times slowly
	Short press	Adjust volume level	Twinkle one time when set up volume level successfully
	Fast click 2 times when playing	Next song	None
	Fast click 3 times when playing	Turn on or turn off LED light	On / off
	Plug USB disk first, then hold to turn on	Change sound file	Twinkly slowly

4.How to change sound file

- 1.Format your USB disk ,and then copy MP3 sound file in.
- 2.Plug USB disk into USB female side, and then plug the cable into Unit.
- 3.Hold On/off button for 3 seconds, then it will upload automatically ,LED light twinkly slowly at same time.
- 4.When upload is finish ,device will play sound file one time, then you can take out USB disk.

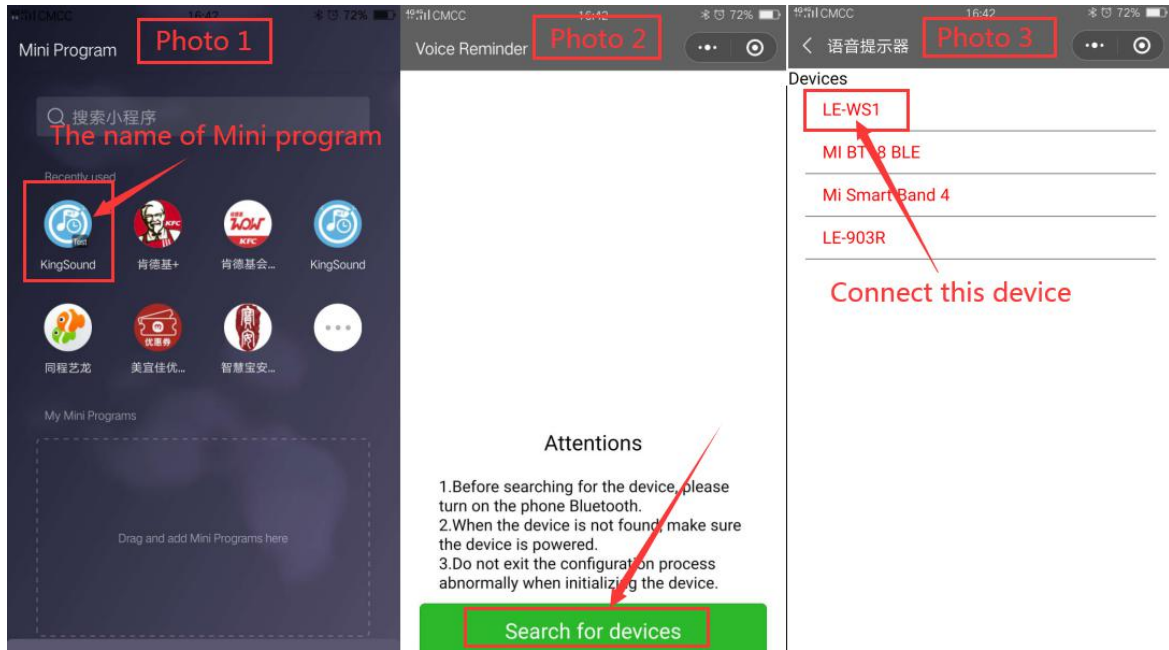
5.How to download the Wechat Mini Program



Use Wechat to scan above QR code

6. How to connect Wechat Mini Program

- 6.1: Open the blue tooth and GPS on your phone, then find the Mini program which the name is 'kingsound ' and open it, then press the green area to search device ,like bellow photo 1.
- 6.2: (1)Shaking your hands in front of PIR motion sensor,then you can find the Bluetooth which the name is 'LE-WS1',then click to connect , and then enter password "000000",Like below photo 2 and photo 3.
(2)Second step is enter your Bluetooth page on your phone,then find "BT-WS1" and then connect it

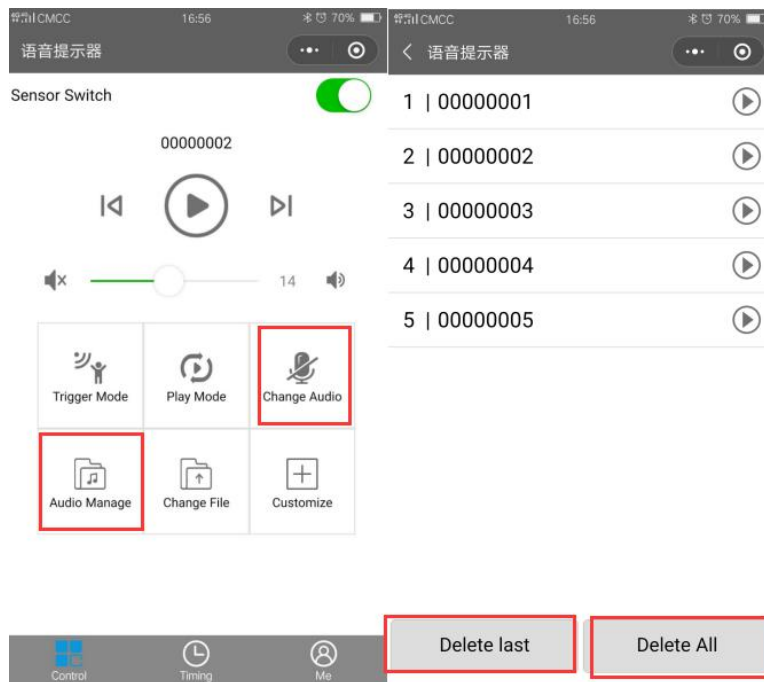


Attentions

1. Before searching for the device, please turn on the phone Bluetooth.
2. When the device is not found, make sure the device is powered.
3. Do not exit the configuration process abnormally when initializing the device.

6.3(1)Change Audio file : press the “Change Audio” in main interface of Wechat Mini program once, then you will hear a “Di”,then you only need to play the music which you want to change on your phone ,if you want to upload more files, just repeat above operation .

(2)Delete Audio File: press the “Audio manage”in the main interface ,you can chose delete last one or delete all .

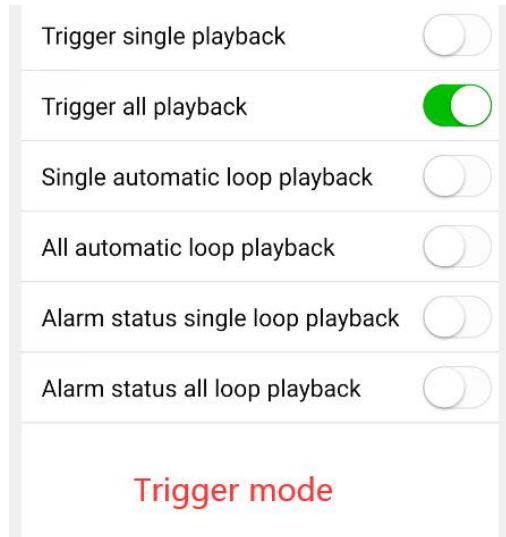


6.4(1)Option of how to trigger to play: This Product only support to use ‘PIR motion sensor ’ to trigger,when you select it , please press “synchronize” in the bottom.

(2) Option of the play mode: like bellow sheet, you can only select one mode, please press “synchronize” in the bottom after your selected .

Trigger single playback	Only play one Audio file which select once,then stop to play
Trigger all playback	Only play all Audio file in the list once,then stop to play

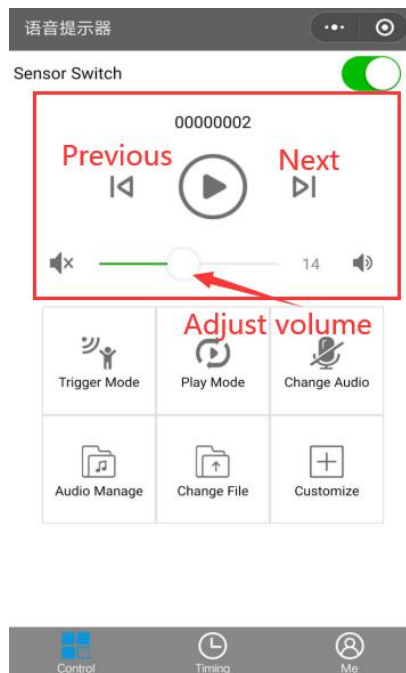
Single automatic loop playback	When supply power,it will loop play one audio file which selected ,again and again (motion sensor does not work in this mode)
All automatic loop playback	When supply power,it will loop play all audio file on the list ,again and again (motion sensor does not work in this mode)



Note: Only works for when it does not set up Timing play and interval play

6.5: Audio file listen (trail)

- (1)press the play/pause button in wechat program interface,then you can hear .
- (2)Press “Next ” or “Previous” to change audio file
- (3)Volume adjust : Slide the white dot to adjust . like bellow photos



7.How to set up timing play and Interval play

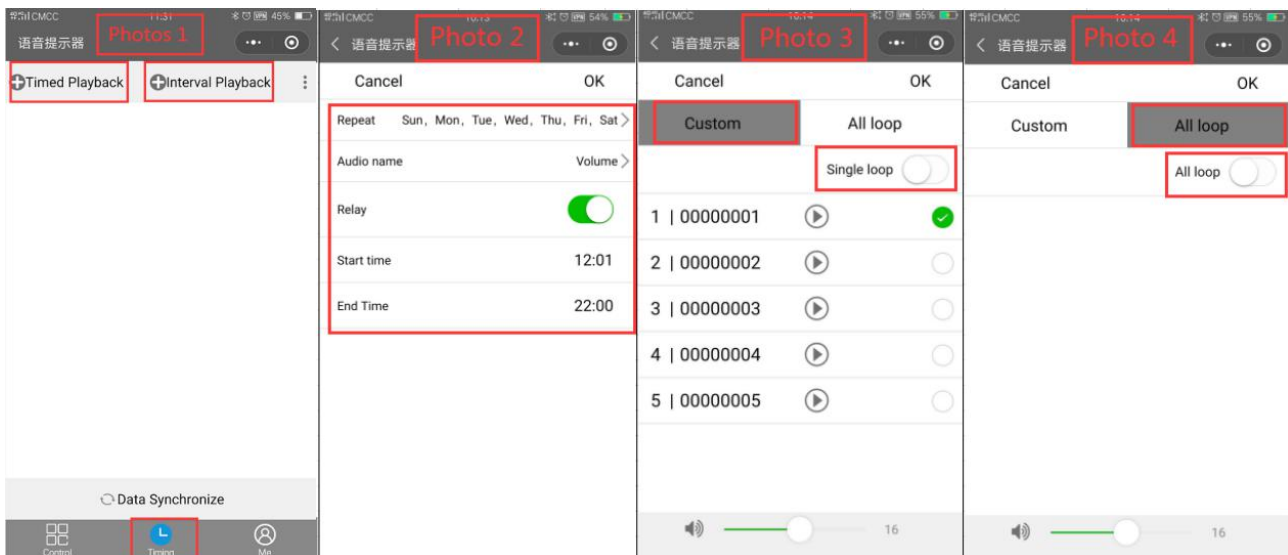
7.1: Press the the “Timing”, you will see two option, one is Timing play, other one is Interval play, like bellow photo 1 :

Timing play

(1) You will enter set up interface after press “timing play”, like bellow photo 2, you can: select which day of this week to play, select audio name (choose single loop play or all loop play, volume etc), turn on or turn off the light panel, set up the start time and end time

(2) Press the audio name, You can select one audio file to play when you selected single loop in that time which set up, like bellow photo 3

(3) Press the audio name, If you select all loop, then all file in your list will be play again and again in that time which set up, like bellow photo 4.



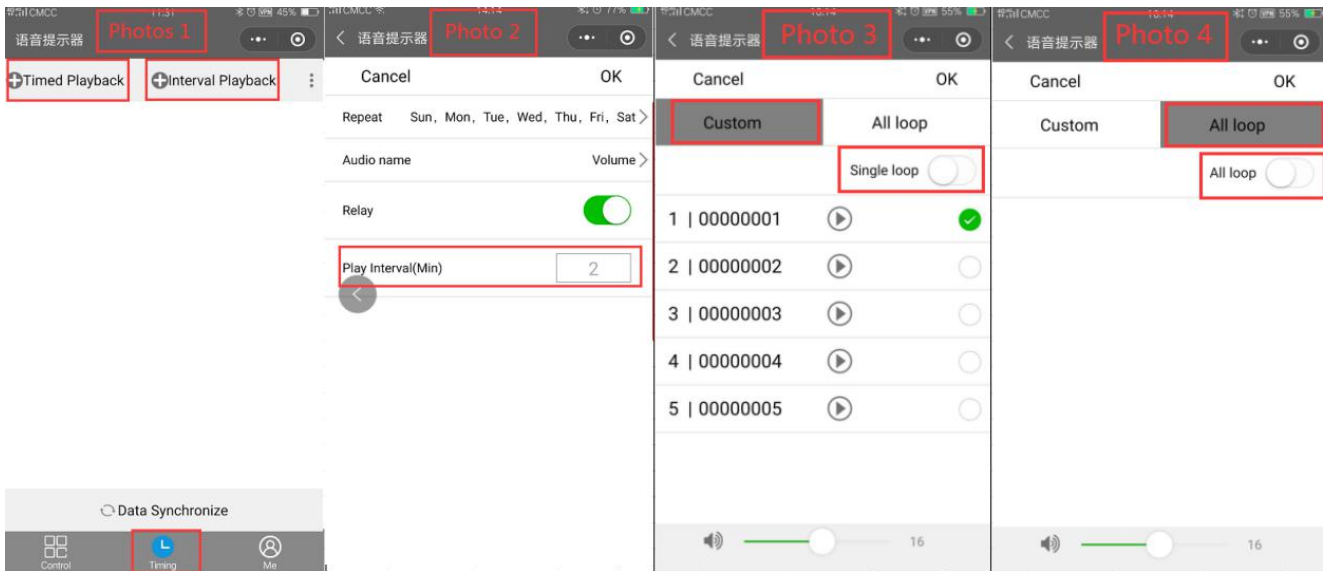
Interval play:

Press the the “Timing”, you will see two option, one is Timing play, other one is interval play, like bellow photo 1.

(1) press “interval play” you will see photo 2, in this interface you can: select which day of this week to play, select audio name (choose single loop play or all loop play, volume etc), turn on or turn off the light panel, set up the interval time

(2) Press the audio name, You can select one audio file to play when you selected single loop, then it will play that audio file one time first, then after 2 minutes (it is optional) it will play once again, like bellow photo 3

(3) Press the audio name, if you choose all loop, then it will play all audio file once in each interval time, Such as: if the interval time is 3 minute, then it will play 00000001 first, after 3 minute, it will play 00000002, after 3 minute, it will play 00000003, like bellow photo 4.



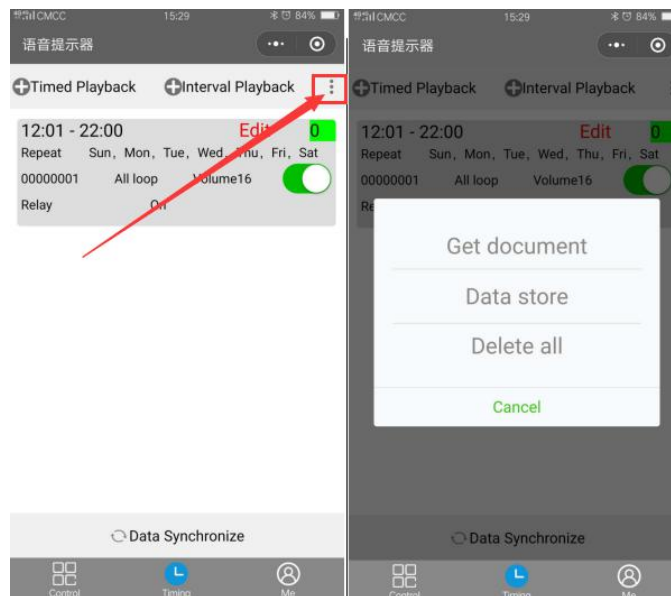
7.2: Save settings: follow above 1 and 2 steps, press 'Ok' in top right side.

Note:

- 1: if you want to Edit the setting ,then you can re-connect the device and press timing ,then glide screen ,you will see the settings you already synchronize .
- 2: Max to set up 20 groups timing play. .
- 3: only can set up 1 group interval play, the shortest interval time is 1 minute , longest interval time is 60 minute .
- 4: Interval play is in advance than timing play,it means timing play will not work if you set up interval play already .

7.3: How to copy settings in plenty device

(1) Press “three dot” next to interval play, choose “get document ” ,you will save all settings of this device one phone ,after that ,you can connect other device and press the “three dot ”,chosed “Data store” you will copy previous settings in here ,and then you can edit ,then press “data synchronize” to send order to the product .



Note: "Delete all" can works for the same product

7.4. How to check the data of timing play and interval play in each product :

(1)press time and then glide the screen ,then you can check.

(2)If you do not need timing play and interval play, you can enter timing interface ,and glide screen , press " get document" ,then press"delete all "

8. How to change the name and password of Bluetooth

(1)Press "Mine",and go to settings, and go to "Bluetooth Name",then you can re-set the name of Bluetooth .

(2)Press "Mine",and go to settings, and go to "change pass word ",then you can re-set the password of Bluetooth

Attention

- 1,After finish above settings, you have to close the backstage of Wechat program,then the device will Execute all settings .
- 2,If you want to turn off the Wechat program ,you have to close the backstage . .
- 3,Android phone system must higher than 8.1 version .
- 4,If the temperature is higher than 33℃ , motion sensor may not working properly .
- 5,Please do not install this product in front of AC or Fans
- 6,When you chose to use battery to supply power, then it will play wrong Audio file or do not work if the battery is too low.

9. FAQ

Why the solar board charge very slow?

A: (1) the solar board can only assist device to charge,then make the life of battery longer, please make sure that sun light Vertical irradiation on Solar board, at least 4 hours.

(2) if you want to put it in a environment which will trigger our device to play many time ,we suggest to use 6V6W solar board or adaptor to charge.

Why can't i use my own player to stop record on my phone?

A: please use QQ player, and chose single play mode .

Why the device do not play when triggered ?

A: Please check if the volume level is mute.

Why can not the Wechat program to change sound file?

A: please kindly check if these two Bluetooth are connected successful

Why is it playing even no people passing by?

A: battery is too low will cause device playing even no people pass by ,time to charge .

Why can not Iphone to change sound file even connect two Bluetooth?

A: (1) Use Wechat program to connect "LE-WS1" first, then open your Bluetooth and to connect "BT-WS1", then go back to the main interface of Wechat program, press "change audio" to record new audio file.

Why can't i find previous sound file after use USB disk to change sound file.

A: When new file is upload, old file will be delete automatically.

Indemnification

SHENZHEN WAYTRONIC ELECTRONIC CO.,LTD. reserves the right to modify and use information without prior notice to customers. New product specifications will be subject to the latest version.

Contact Us

Shenzhen Waytronic Electronics Co., Ltd.

Tel: +86-755-29605099

Fax : +86-755-29606626

Website: en.waytronic.com

E-mail: WT1999@waytronic.com

Add:4/F,Building No.11,Fuan Robotics Industrial Park, Fuyong,Baoan District,Shenzhen ,518103,Guangdong ,China